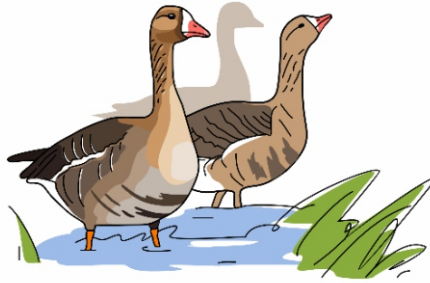


18th Conference of
Goose Specialist Group
27 – 30 March 2018
Klaipėda, Lithuania

Conference abstracts



**18th CONFERENCE OF GOOSE SPECIALIST
GROUP**

Conference abstracts

27-30 March, 2018
Klaipėda, Lithuania

ORGANISERS



Klaipėda University



SCIENTIFIC COMMITTEE

Bart Nolet, Netherlands Institute for Ecology, the Netherlands

Thomas Lameris, Netherlands Institute for Ecology, the Netherlands

Modestas Ružauskas, Lithuanian University of Health Sciences, Lithuania

Andrea Kölzsch, Max Planck Institute for Ornithology – Vogelwarte Radolfzell, Germany

ORGANIZING COMMITTEE

Rasa Morkūnė, Klaipėda University, Lithuania

Julius Morkūnas, Klaipėda University and Lithuanian Ornithological Society, Lithuania

Peter M. Glazov, Institute of Geography RAS, Russia

Zita R. Gasiūnaitė, Klaipėda University, Baltic Valley Association, Lithuania

Viktorija Vaitkevičienė, Klaipėda University, Baltic Valley Association, Lithuania

Cover: Vitalija Gasiūnaitė

Editors: Rasa Morkūnė, Modestas Bružas, Julius Morkūnas.

All abstracts were reviewed by Scientific committee. The style and grammar of the abstracts were not corrected.

UDK 551.46

© Marine Research Institute of Klaipėda University

ISBN 978-9955-18-979-4

**DISTRIBUTION OF GREYLAG GEESE (*Anser anser*) RINGED
DURING BREEDING SEASON IN THE NEMUNAS DELTA**

Vytautas Eigirdas*¹, Ričardas Patapavičius², Julius Morkūnas³

¹Ornithological Station Ventės Ragas, Kaunas Tadas Ivanauskas Museum of Zoology, Lithuania, ²Lithuanian Bird Ringing Centre, Kaunas Tadas Ivanauskas Museum of Zoology, Lithuania, ³Klaipėda University, Lithuania

* v.eigirdas@gmail.com

Keywords: migration, wintering, graylag geese

Increasing Greylag Geese populations in Europe have positively affected breeding population in Lithuania. One of the biggest increase of breeding pairs Graylag Geese was recorded in wetlands around Curonian lagoon in Nemunas delta. Breeding and moulting geese from 2012 - 2017 annually are ringed in Nemunas delta. In the end of June, juveniles and adults birds caught using nets built on shore of Kintai fishponds. Additionally in spring 2017 using canon nets was caught seven adults individuals. Totally in few seasons 47 birds was ringed with white neckbands. From ringed birds 80% of them were resighted later, more than 400 sightings. Greylag Geese marked in Nemunas delta region, was recorded wintering in Germany, Poland, Denmark and Hungary. The most important wintering place for Graylags from Nemunas delta is Germany (Mecklenburg-Vorpommern). On migration Graylags were recorded in Poland. During moulting and post moulting period birds from Lithuania was recorded in Lithuania and Estonia. There is few records of Graylags ringed in Lithuania in the 1980's wintering in France, Spain, and United Kingdom. Data from the nowadays indicate a much shorter migration route, average of 650km to wintering grounds. Graylags are staying in breeding grounds very long period. They arrive to breeding grounds in mid of February and stays until middle of December. Geese find breeding areas use territories of grasslands around waterbodies, and stays close to breeding areas until snow covers the feeding areas.