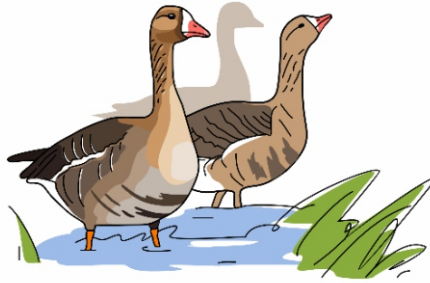


18th Conference of
Goose Specialist Group
27 – 30 March 2018
Klaipėda, Lithuania

Conference abstracts



**18th CONFERENCE OF GOOSE SPECIALIST
GROUP**

Conference abstracts

27-30 March, 2018
Klaipėda, Lithuania

ORGANISERS



Klaipėda University



SCIENTIFIC COMMITTEE

Bart Nolet, Netherlands Institute for Ecology, the Netherlands

Thomas Lameris, Netherlands Institute for Ecology, the Netherlands

Modestas Ružauskas, Lithuanian University of Health Sciences, Lithuania

Andrea Kölzsch, Max Planck Institute for Ornithology – Vogelwarte Radolfzell, Germany

ORGANIZING COMMITTEE

Rasa Morkūnė, Klaipėda University, Lithuania

Julius Morkūnas, Klaipėda University and Lithuanian Ornithological Society, Lithuania

Peter M. Glazov, Institute of Geography RAS, Russia

Zita R. Gasiūnaitė, Klaipėda University, Baltic Valley Association, Lithuania

Viktorija Vaitkevičienė, Klaipėda University, Baltic Valley Association, Lithuania

Cover: Vitalija Gasiūnaitė

Editors: Rasa Morkūnė, Modestas Bružas, Julius Morkūnas.

All abstracts were reviewed by Scientific committee. The style and grammar of the abstracts were not corrected.

UDK 551.46

© Marine Research Institute of Klaipėda University

ISBN 978-9955-18-979-4

CHANGES IN GOOSE MIGRATION PATTERNS AT A WIND PARK

Julius Morkūnas^{*1,2}, Rasa Morkūnė^{1,2}, Viačeslav Jurkin^{1,2}

¹Klaipėda University, Lithuania, ²Coastal Research and Planning Institute, Lithuania

* juliusmorkunas@gmail.com

Keywords: wind energy, goose migration, impact

Wetlands in the western part of Lithuania attract both large flocks of waterfowl and wind energy companies because territories with spring floods near Nemunas delta are one of most windy area in the country. This work is based on four-year monitoring data at a wind turbine park (17 turbines, 2.1MW each) which was built at partly sessional flooded grasslands, dry grasslands and arable lands close to Čiūteliai and Lankupiai villages.

The study area was important for spring goose concentrations and eight species of geese with dominance of Great White-fronted geese (95% of all geese) were recorded during surveys. Geese consisted of 77-88 % of total bird abundance.

The wind turbine park was suitable feeding habitat for waterfowl's daily visits thus, they number varied from 500 to 33.300 birds per day. More than 300.000 geese flew through the wind turbine park each spring at the average passage height of 60-80 meters. Changes in flight patterns were recorded after wind turbines park started operating but it did not influence number of passing geese. Geese avoided passing among wind turbines which are less than 500 meters from each other. However, during intense migrations geese were passing the area with much lower avoidance level. Regarding the results of carcass searches, no casualties of geese were found during 4-year period in the wind turbine park.